

| Malaysia Model House |



Tel 03 - 4252 4888

- 1. •DLNO : 9870-3/10-2012 / 1174 •Valid : 10<sup>th</sup> . Oct . 2007 - 09<sup>th</sup> . Oct . 2012
- 2. •APNO : 9870-3/2215 / 2008(10) •Valid : 10<sup>th</sup> . Oct . 2007 - 09<sup>th</sup> . Oct . 2008

- 01) Picture, image, air view and perspective plan used in this catalogue is to provide a broad understanding, and is different from the actual ones.
- 02) Air view and perspective plan presented in this catalogue is provided for better understanding of the customer, and may be changed during the actual construction.
- 03) Roof, shape of the top house, color of the exterior wall and graphic of the sidewalk presented in the perspective plan may be changed during the actual construction in accordance with the scenery and color deliberations.
- 04) Environmental rights including rights to enjoy sunshine and scenery, and privacy may be infringed in accordance with the location of the complex and household, and the surrounding constructions.
- 05) Landscape gardening and building stone plan of the complex may be changed.
- 06) Color, design, material quality and size of the furniture and closing materials may be different from the one in the model house in actual construction.
- 07) Size, material quality and design of windows and doors and glass frames may be different from the one in the model house according to the final engineering works of the contractor.
- 08) Construction plans may be changed due to the new construction of the surrounding complex. And environmental rights including rights to enjoy sunshine, scenery and privacy may be infringed in accordance with the surrounding constructions.  
Make sure to check before you make a contract.
- 09) Ground plan (size and demarcation line), complex arrangement plan, floor spaces and drawing contents presented in this catalog are provided for better understanding of the customer, and may be slightly changed during the actual construction.
- 10) Number and location of pipe drains in balcony and shape of rails may be changed during the actual construction.
- 11) Distributed dimensions may slightly be changed due to the construction design change after the lot-out.
- 12) Image, perspective plan and isometric presented in this catalogue are provided for better understanding of the resident, and may be different from the one in actual construction.

Developed by: **PERSPEKTIF MASA SDN BHD** (318020-D)  
Member of **ACMAR INTERNATIONAL**  
No.37A, Jalan Tiro 2, Bandar Baru Klang, 41150 Klang,  
Selangor Darul Ehsan, Malaysia.

Managed by: **ACMAR INTERNATIONAL**

A joint-venture project with: **PERMODALAN NEGERI SELANGOR BERHAD** (2005472-V)

Business Partner: **Menas 21**



A privilege the world covets - *D'* RAPPORT

**ACMAR INTERNATIONAL**  
D'Rapport, Jalan Nipah, Off Jalan Ampang Berembang, 55000 Kuala Lumpur, MALAYSIA  
Tel. 03-4252 4888 www.acmar.com



Everything in the world is from you... *D'* R A P P O R T

# *D'* R A P P O R T offers opportunity on a whole new scale!

An opportunity of unlimited value featuring a huge complex of premium homes  
*D'* R A P P O R T is a Global 1% investment product located in the internationally-renowned center of Malaysia.  
A lucrative investment in the new pride of Kuala Lumpur



\* Roof, shape of the top house, color of the exterior wall and graphic of the side wall presented in the perspective plan may be changed during the actual construction in accordance with the scenery and color deliberations.  
\* Size, location and shape of the symbolic tower for underground merchandising facilities located in the front side of the complex may be changed.  
\* Leased merchandisers located in the 1st basement may be changed.  
\* Surrounding of the complex in the perspective plan may be different from the actual surrounding. Make sure to check the actual field.



\* Roof, shape of the entrance, color of the exterior wall and graphic of the sidewalk present in the perspective plan may be changed during the actual construction in accordance with the scenery and color deliberations.  
 \* Size, location and shape of the symbolic tower for underground merchandising facilities located in the front side of the complex may be changed.  
 \* Leased merchandisers located in the 1st basement may be changed.  
 \* Surrounding of the complex in the perspective plan may be different from the actual surrounding. Please check the actual field.

## Another landmark is crafted to grace the skylines of Malaysia amidst the prestigious Petronas Twin Towers and The Kuala Lumpur Tower.

- Only 3km away from the thriving center of Kuala Lumpur
- Easy access to Ampang highway & KLCC shopping haven
- 10 minutes away from the Royal Selangor Golf Club (transferable membership with Hanyang CC), Gleneagles Hospital & Lake Park
- Within an international education center with 10 prestigious international schools available close-by
- Secured area amongst embassies and foreign legations

Location

Everything in the world is from you... *R*APPORT



D | R | A | P | P | O | R | T



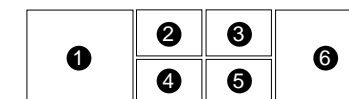
**B**uilding Plan

## A prestigious resort-living lifestyle



■ Festa landscape view

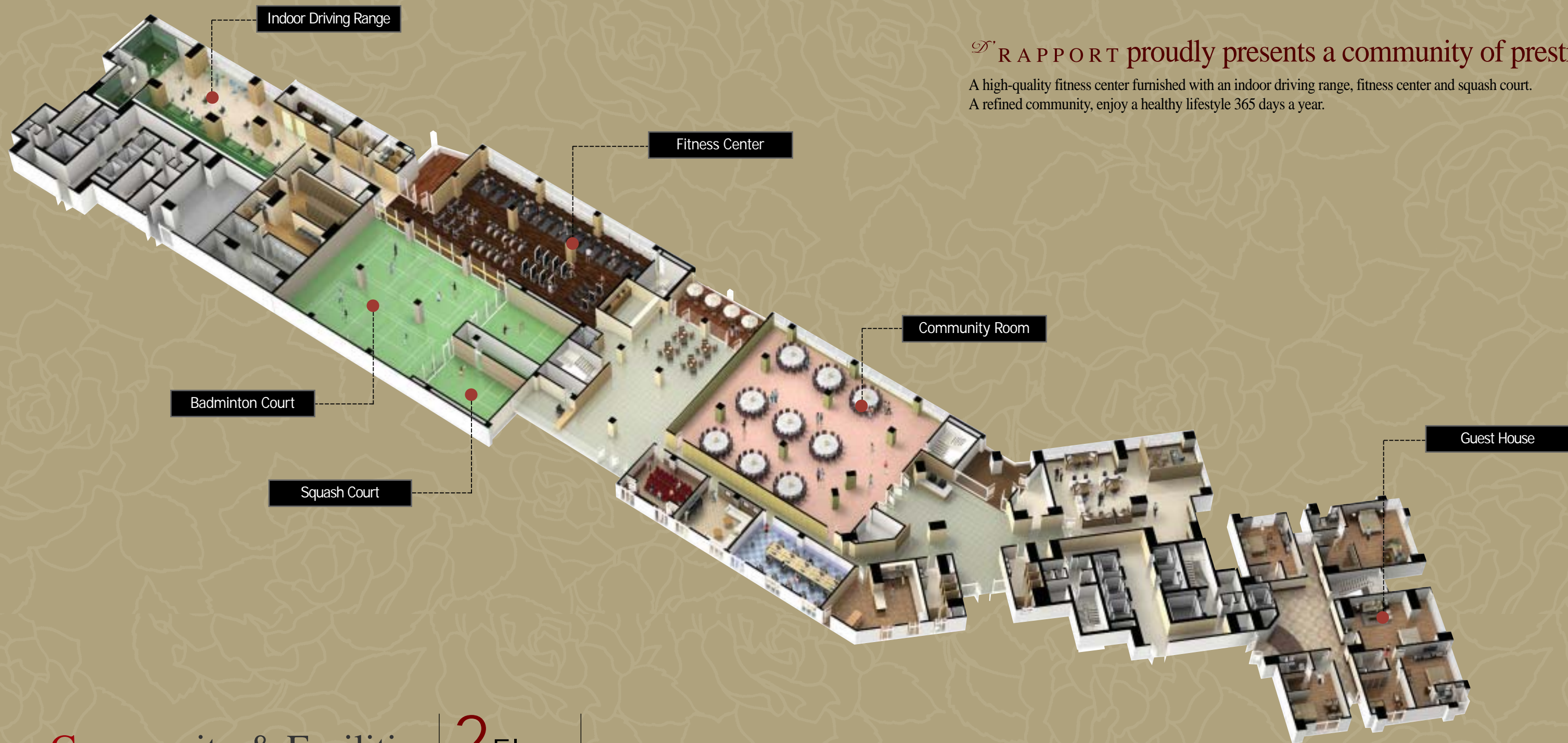
Where the comfort of home and convenience of commerce, recreation and education come together in ultimate union. *R*APPORT brings you a lifestyle of exclusive living within an integrated development of class residences, business facilities and commercial pleasures.



- ① Oriental Garden      ② Tropical Garden
- ③ Central Pool Garden      ④ Fitness Garden
- ⑤ Main Entrance      ⑥ Fountain Pool Garden



\* Landscape plan in this catalog is provided for better understanding of the customer, and may be different from the actual one.  
\* Landscape architecture, amusement facilities and landscape facilities may be changed during the actual construction.



D'RAPPORT proudly presents a community of prestige

A high-quality fitness center furnished with an indoor driving range, fitness center and squash court.  
A refined community, enjoy a healthy lifestyle 365 days a year.

## Community & Facilities | 2 Floor



Fitness Center



Squash Court



Indoor Driving Range

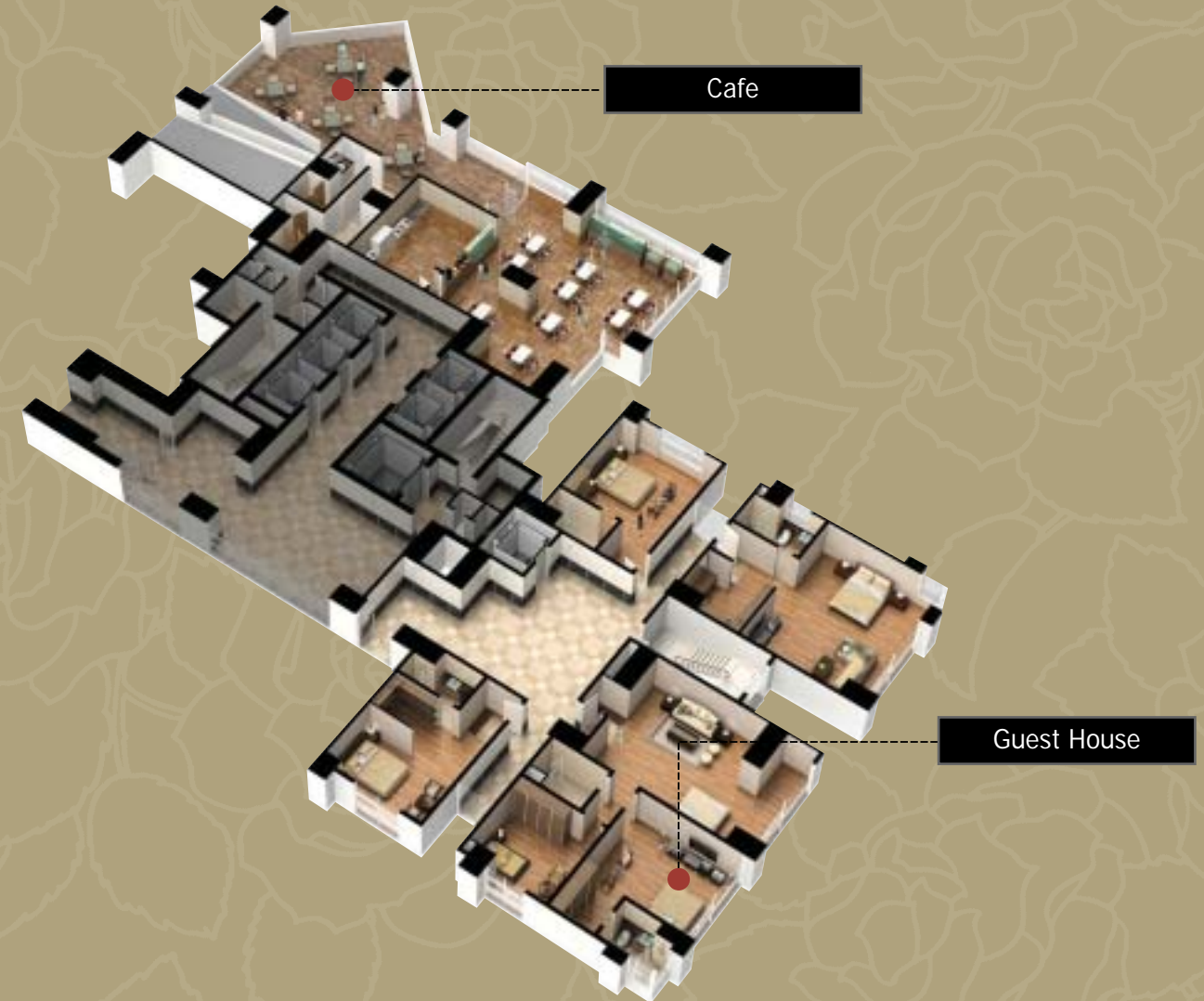


- **Fitness Center** \_ Various sporting equipments are available for a healthy and active lifestyle.
- **Indoor Driving Range** \_ Enjoy the perfect game even when it rains.
- **Badminton Court** \_ Have a fun with family and friends.
- **Squash/Tennis Court** \_ Top-class courts for your leisure pleasure
- **Locker Room** \_ Secure storage room for your valuables
- **Community Room** \_ The perfect location to host events and community meetings
- **Prayer Room** \_ A place of solitude for meditation and prayer
- **DVD Room** \_ Equipped with excellent audio and visual facilities
- **Karaoke Room** \_ A complete karaoke system for family fun
- **Game Room** \_ A game room for fun and pleasure
- **Guest House** \_ Private space for residents to host meetings or events

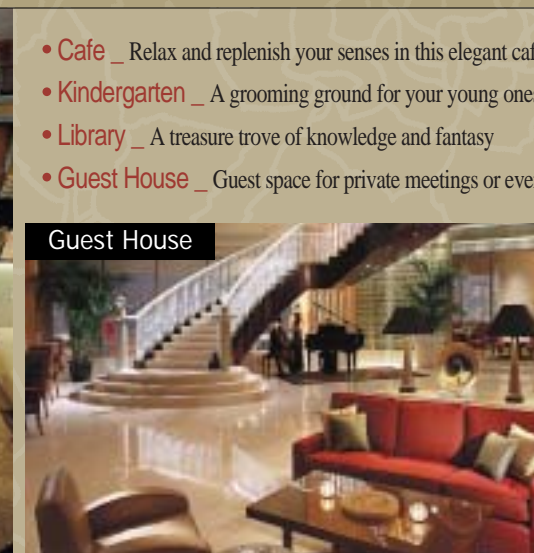
\* The above images are computer graphics and image cuts, and are provided for better understanding of the customer. The actual images may be different.

## Join the exclusive membership of the global 1%

Take a dip in the swimming pool, enjoy a tennis game or chill-out in an elegant cafe.  
Experience relaxation and alleviation in this composed community for you and your family.



## Community & Facilities | 3 Floor

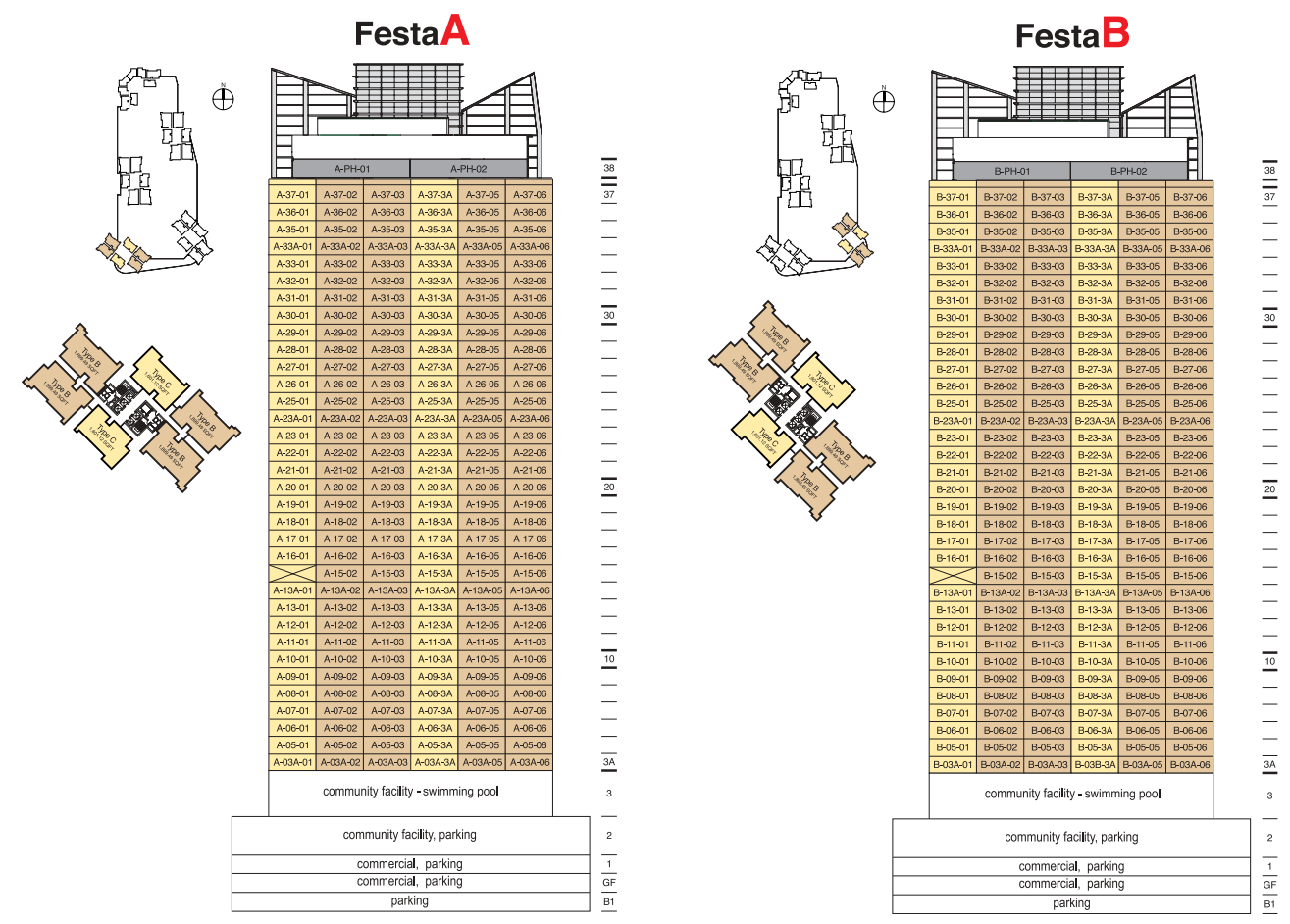


- **Cafe** \_ Relax and replenish your senses in this elegant cafe.
- **Kindergarten** \_ A grooming ground for your young ones to learn and play
- **Library** \_ A treasure trove of knowledge and fantasy
- **Guest House** \_ Guest space for private meetings or events

\* The above images are computer graphics and image cuts, and are provided for better understanding of the customer. The actual images may be different.



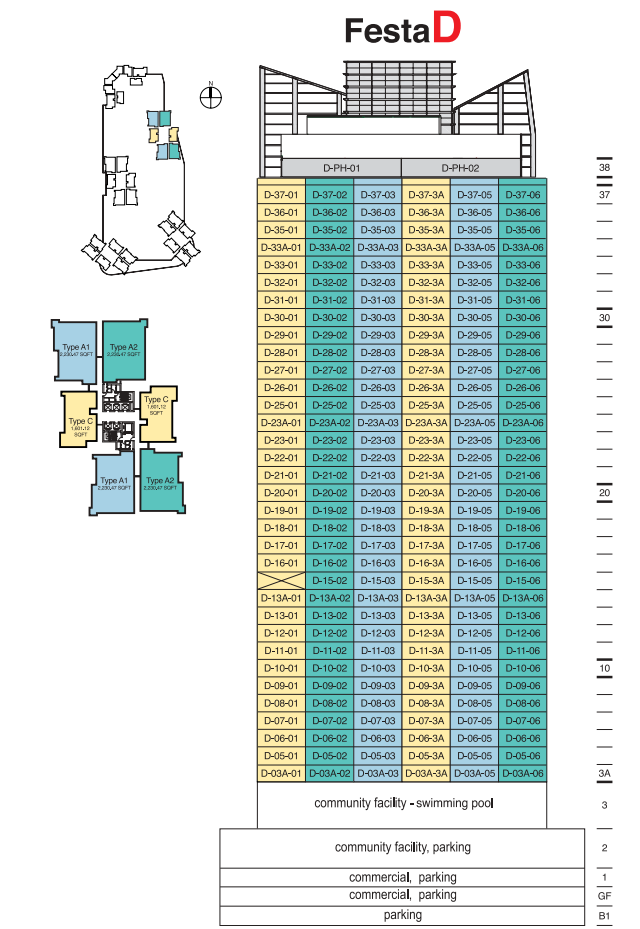
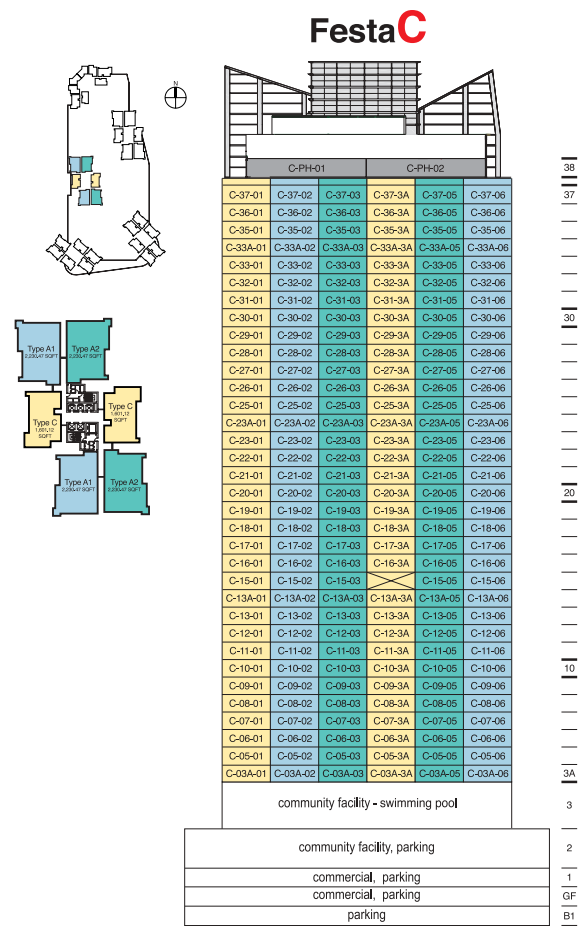
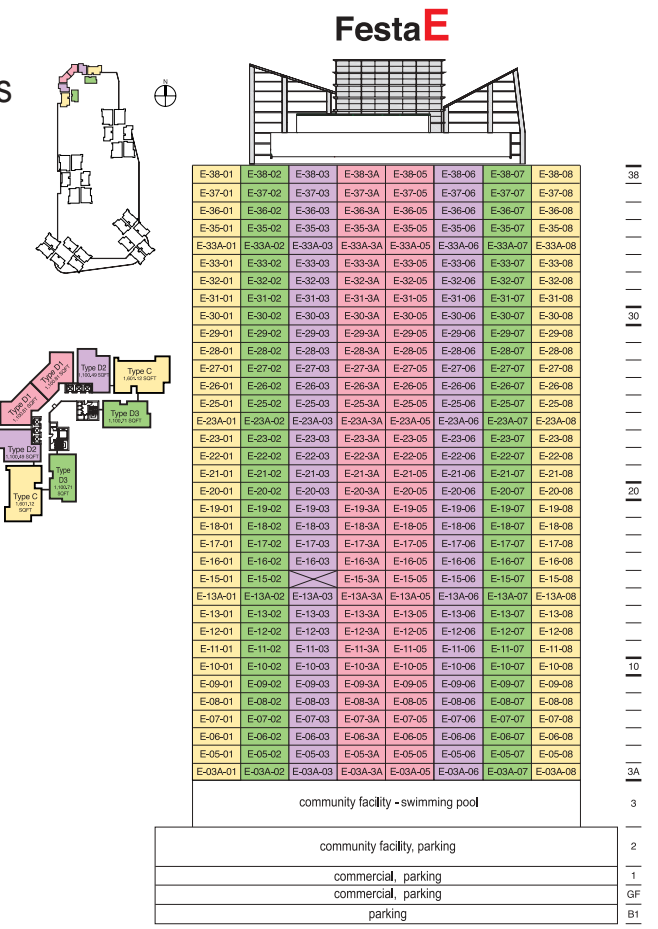
Building plan for Festa



Penthouse	4,496.15 SQFT / 417.71m <sup>2</sup> / 8households	Type B	1,899.49 SQFT / 176.47m <sup>2</sup> / 272households	Type D2	1,100.49 SQFT / 102.24m <sup>2</sup> / 69households
Type A1	2,230.47 SQFT / 207.22m <sup>2</sup> / 136households	Type C	1,601.12 SQFT / 148.75m <sup>2</sup> / 338households	Type D3	1,100.71 SQFT / 102.26m <sup>2</sup> / 70households
Type A2	2,230.47 SQFT / 207.22m <sup>2</sup> / 136households	Type D1	1,100.81 SQFT / 102.27m <sup>2</sup> / 70households	Complex I (Festa)	Total 1,099households

Panoramic Views of Smart Pond & Petronas Twin Towers

Building arrangement boasts natural sunlight exposure and spectacular city views.



\* The above block plan for households is to provide a better understanding of the customer and is subject to change for the alteration of construction design and other reasons.



D | R | A | P | P | O | R | T



# Unit Plan

- Home appliances and interior items presented in the interior perspective plan of this catalog are provided for better understanding of the customer. Make sure to check if they are included at the time of contract.
- Ground plan (size and demarcation line), interior perspective plan (color and demarcation line), complex arrangement plan, floor spaces and drawing contents presented in this catalog are provided for better understanding of the customer, and may be slightly changed during the actual construction.
- Shape, material quality and color of windows and doors may be changed during the actual construction.
- Number and location of pipe drains in balcony and shape of rails may be changed during the actual construction.
- Representation of dimensions in the above ground plan is not made with accurate reference point.
- If you need a detailed drawing, contact the model house or the headquarters.

207.22 SQM  
2230.47 SQFT

A-1 Type | 136units

## TypeA-1 ELEGANT AND CLASSY

Unit Plan



Elegant and luxurious living spaces





Everything in the world is from you... D'RAPPORT



D' | R | A | P | P | O | R | T



## Unit Plan

- Home appliances and interior items presented in the interior perspective plan of this catalog are provided for better understanding of the customer. Make sure to check if they are included at the time of contract.
- Ground plan (size and demarcation line), interior perspective plan (color and demarcation line), complex arrangement plan, floor spaces and drawing contents presented in this catalog are provided for better understanding of the customer, and may be slightly changed during the actual construction.
- Shape, material quality and color of windows and doors may be changed during the actual construction.
- Number and location of pipe drains in balcony and shape of rails may be changed during the actual construction.
- Representation of dimensions in the above ground plan is not made with accurate reference point.
- If you need a detailed drawing, contact the model house or the headquarters.

207.22 SQM  
2230.47 SQFT  
A-2 Type | 136units

TypeA-2 ELEGANT AND CLASSY

Unit Plan



Artistic lifestyle that inspire celebrities alike





D | R | A | P | P | O | R | T



# Unit Plan

- \* Home appliances and interior items presented in the interior perspective plan of this catalog are provided for better understanding of the customer. Make sure to check if they are included at the time of contract.
- \* Ground plan (size and demarcation line), interior perspective plan (color and demarcation line), complex arrangement plan, floor spaces and drawing contents presented in this catalog are provided for better understanding of the customer, and may be slightly changed during the actual construction.
- \* Shape, material quality and color of windows and doors may be changed during the actual construction.
- \* Number and location of pipe drains in balcony and shape of rails may be changed during the actual construction.
- \* Representation of dimensions in the above ground plan is not made with accurate reference point.
- \* If you need a detailed drawing, contact the model house or the headquarters.

176.47 SQM  
1899.49 SQFT  
B Type | 272units

# TypeB

 SPACIOUS AND COMFORTABLE

Unit Plan



Spaces of artistic aesthetics and superior living





D | R | A | P | P | O | R | T



# Unit Plan

- Home appliances and interior items presented in the interior perspective plan of this catalog are provided for better understanding of the customer. Make sure to check if they are included at the time of contract.
- Ground plan (size and demarcation line), interior perspective plan (color and demarcation line), complex arrangement plan, floor spaces and drawing contents presented in this catalog are provided for better understanding of the customer, and may be slightly changed during the actual construction.
- Shape, material quality and color of windows and doors may be changed during the actual construction.
- Number and location of pipe drains in balcony and shape of rails may be changed during the actual construction.
- Representation of dimensions in the above ground plan is not made with accurate reference point.
- If you need a detailed drawing, contact the model house or the headquarters.

148.75 SQM  
1601.12 SQFT  
C Type | 338units

## TypeC PRACTICAL LUXURY LAYOUTS

Unit Plan



Modern city-living fused with natural surroundings





D | R | A | P | P | O | R | T



# Unit Plan

- \* Home appliances and interior items presented in the interior perspective plan of this catalog are provided for better understanding of the customer. Make sure to check if they are included at the time of contract.
- \* Ground plan (size and demarcation line), interior perspective plan (color and demarcation line), complex arrangement plan, floor spaces and drawing contents presented in this catalog are provided for better understanding of the customer, and may be slightly changed during the actual construction.
- \* Shape, material quality and color of windows and doors may be changed during the actual construction.
- \* Number and location of pipe drains in balcony and shape of rails may be changed during the actual construction.
- \* Representation of dimensions in the above ground plan is not made with accurate reference point.
- \* If you need a detailed drawing, contact the model house or the headquarters.

## TypeD Elegant + Chic

Unit Plan

102.27 SQM  
1100.81 SQFT  
D-1 Type | 70units

D1

A brand new residential concept with a modern and chic atmosphere crafted for city-living



102.24 SQM  
1100.49 SQFT  
D-2 Type | 69units

D2

Quality living spaces with trendy and contemporary settings



102.26 SQM  
1100.71 SQFT  
D-3 Type | 70units

D3

An ideal space where elegance and practicality resides





# Unit Plan

Home appliances and interior items presented in the interior perspective plan of this catalog are provided for better understanding of the customer. Make sure to check if they are included at the time of contract.

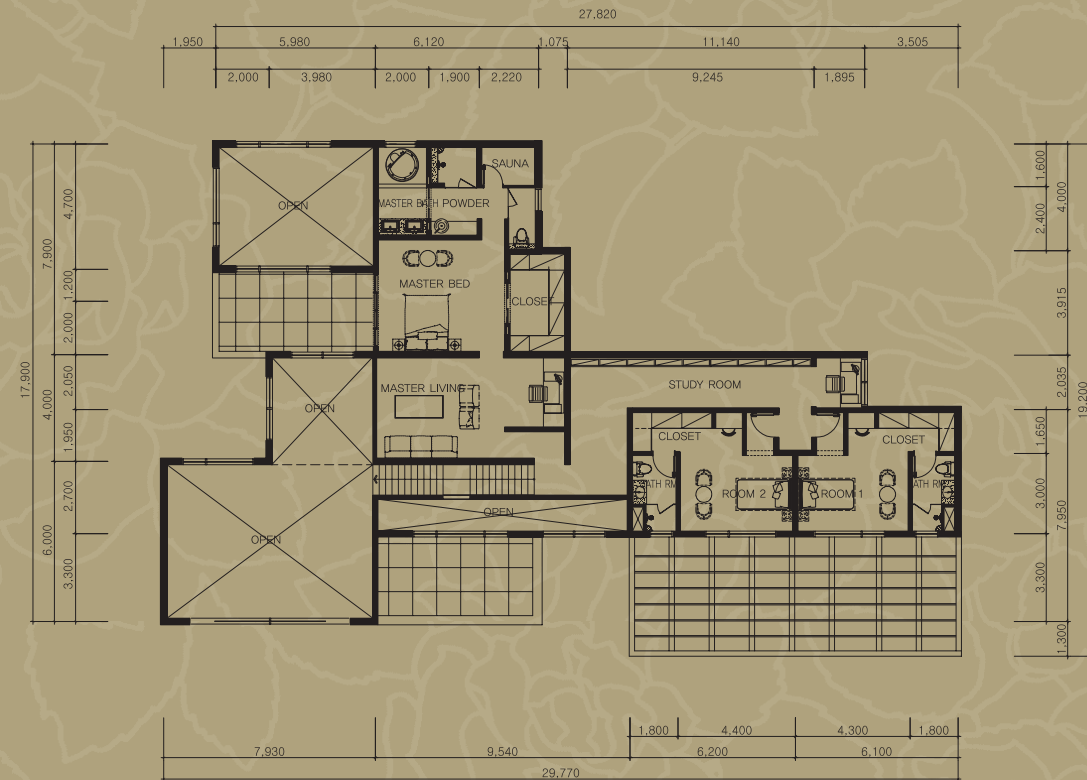
- Ground plan (size and demarcation line), interior perspective plan (color and demarcation line), complex arrangement plan, floor spaces and drawing contents presented in this catalog are provided for better understanding of the customer, and may be slightly changed during the actual construction.
- Shape, material quality and color of windows and doors may be changed during the actual construction.
- Number and location of pipe drains in balcony and shape of rails may be changed during the actual construction.
- Representation of dimensions in the above ground plan is not made with accurate reference point.

If you need a detailed drawing, contact the model house or the headquarters.

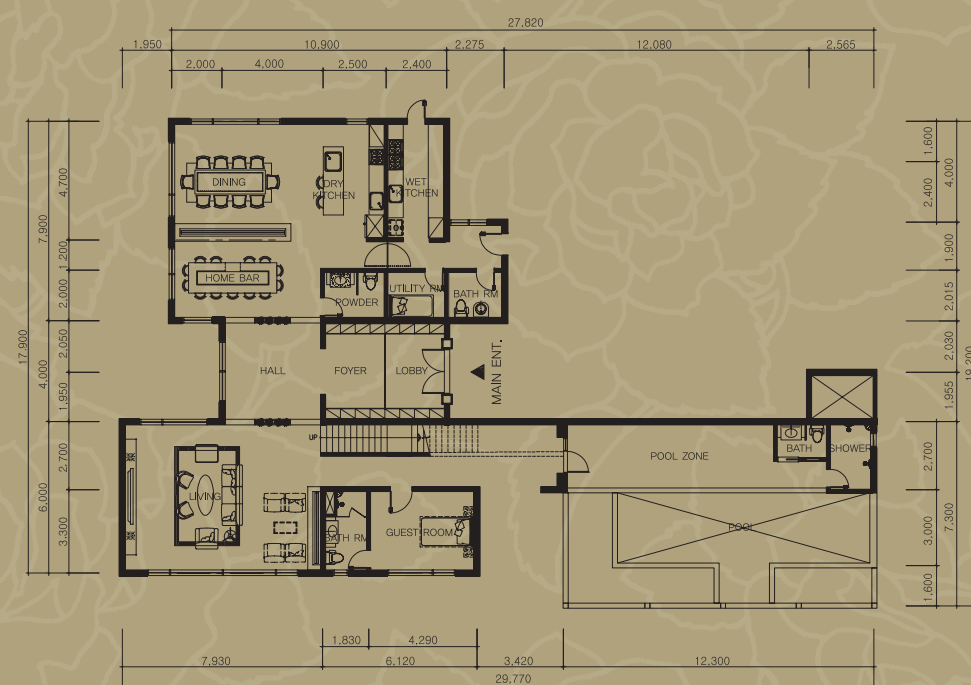
## Penthouse (DUPLEX UNIT)

Unit Plan

### 2F



### 1F





# Acmar International & Menos 21 - A dream team creating a first-class city!

Acmar International has headed a series of prominent real estate and city development projects in Malaysia for the last 70 years. Working together with Menos 21, a marketing and solution specialist, these two powerhouses have combined forces to create a brand new residential culture history in Malaysia.

*R*APPORT goes beyond a construction masterpiece and emerges as a global investment product. A new pride of Kuala Lumpur and a Malaysian landmark is about to be born.



\*The above images are computer graphics and image cuts, and are provided for better understanding of the customer. The actual images may be different.



01 XIAMEN-CHINA 02 PORT TECH CITY 03 BANDAR BARU KLANG



01 Bucheon, HYUNDAI 02 Yeonhee Dong, Seong-won 03 Yeomchang Dong, DONG AH

